

Products

Report No.: **1613022329-01**

Page 1 of 3

Client: **CÔNG TY CỔ PHẦN SẢN XUẤT VÀ THƯƠNG MẠI ACP**
Số 117, Đại lộ Tôn Đức Thắng, An Đồng, An Dương, Hải Phòng

Test Item(s): Plastic film

Identification/
Model No(s): MÀNG PE (MÀNG STRETCH FILM); MATERIAL: PE; COLOR: TRONG

Sample receiving date: 2015-08-18

Test period: 2015-08-18 to 2015-08-21

Test Specification:

Test result:

Legal requirement:

1. Restriction of the Use of Certain Hazardous Substances in Electrical and Electronic Equipment, 2011/65/EU
Cadmium, Lead, Chromium (VI), Mercury, Polybrominated biphenyls (PBB) and Polybrominated diphenyl ethers (PBDE)

PASS

For and on behalf of
TÜV Rheinland Vietnam Co., Ltd.



Hoa Thi Xuan Dieu/
Project Manager

2015-08-21

Date

Name/Position

Test result is drawn according to the kind and extent of tests performed.

This test report relates to the a. m. test sample. Without permission of the test center this test report is not permitted to be duplicated in extracts. This test report does not entitle to carry any safety mark on this or similar products.



Test Report No.: 1613022329-01

TÜV RHEINLAND VIETNAM
SOFTLINES LABORATORY
QUANG TRUNG SOFTWARE CITY
DIST.12, HCM CITY

Page 2 of 3

Material List:

Material No.	Material	Color	Location
M001	Plastic	Transparent	Plastic film

1. Cadmium, Lead, Chromium (VI), Mercury, Polybrominated biphenyls (PBB) and Polybrominated diphenyl ethers (PBDE)

Test method: Screening test by XRF for Lead (Pb); Cadmium (Cd); Mercury (Hg); Chromium (Cr) and Bromine (Br) with reference to IEC 62321: 2008 section 6

Confirmation test by wet chemistry as following:

- Total Cadmium, Lead, Mercury, Chromium

Ref. to IEC 62321:2008, totally digested then determination by ICP-OES

- Chromium (VI)

Alkaline digestion, determination by UV-Vis spectrophotometry (IEC 62321:2008)

- PBBs, PBDEs

Ref. to IEC 62321: 2008, determination by GC-MS

Test result:

Test parameter	Unit	RL	Material No.	M001
			Requirement	Result
Cadmium (Cd)	mg/kg	10	< 100	N.D.
Lead (Pb)	mg/kg	10	< 1000	N.D.
Mercury (Hg)	mg/kg	10	< 1000	N.D.
Chromium VI (Cr VI)	mg/kg	3	< 1000	N.D.
Total Polybrominated biphenyls (PBBs)	mg/kg	100	< 1000	N.D.
Total Polybrominated biphenyl ethers (PBDEs)	mg/kg	100	< 1000	N.D.
Conclusion				Pass

Abbreviation: mg/kg = milligram per kilogram

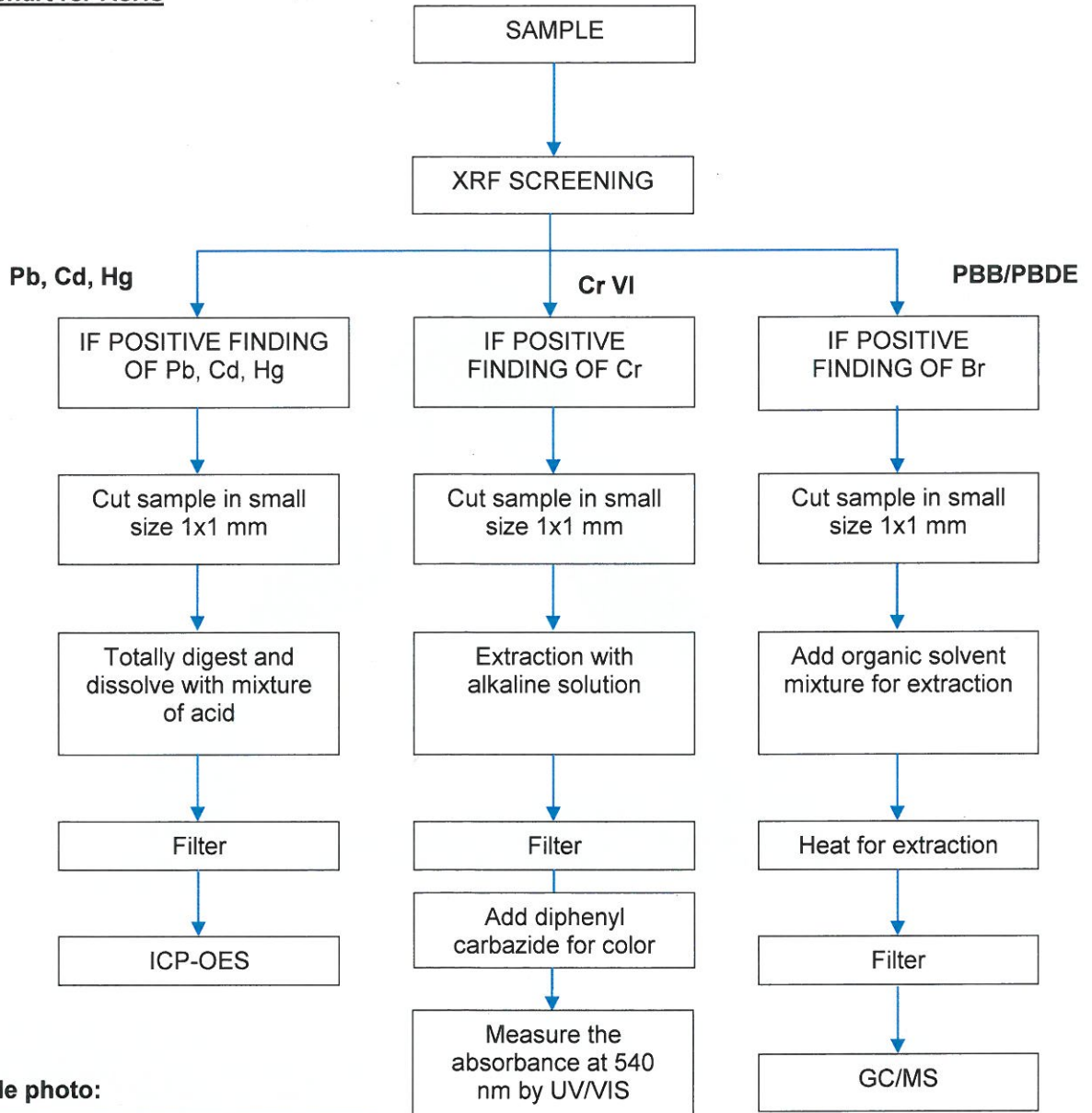
RL = Reporting Limit

N.D. = Not Detected (<RL)

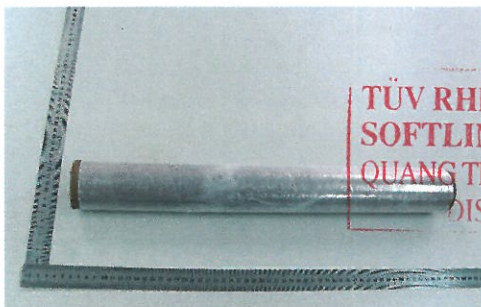
List of PBBs	List of PBDEs
Bromobiphenyl (MonoPBB)	Bromodiphenyl ether (MonoPBDE)
Dibromobiphenyl (DiPBB)	Dibromodiphenyl ether (DiPBDE)
Tribromobiphenyl (TriPBB)	Tribromodiphenyl ether (TriPBDE)
Tetrabromobiphenyl (TetraPBB)	Tetrabromodiphenyl ether (TetraPBDE)
Pentabromobiphenyl (PentaPBB)	Pentabromodiphenyl ether (PentaPBDE)
Hexabromobiphenyl (HexaPBB)	Hexabromodiphenyl ether (HexaPBDE)
Hexabromobiphenyl (HeptaPBB)	Heptabromodiphenyl ether (HeptaPBDE)
Octabromobiphenyl (Tech)(OctaPBB)	Octabromobiphenyl ether (OctaPBDE)
Nonabromobiphenyl (NonaPBB)	Nonabromobiphenyl ether (NonaPBDE)
Decabromobiphenyl (DecaPBB)	Decabromobiphenyl Ether (DecaPBDE)

EINLAN
VES LA
RUNG SC
T.12, HC

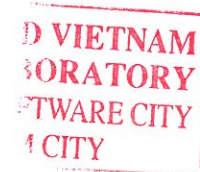
Flow chart for RoHs



Sample photo:



Lab I.D.: A000243045-001



--- END ---